



03 Oct 2025

Contents:

- Headteacher's insight
- News from our classrooms
- Events and reminders

Headteacher's insight

As October arrives, it's hard to believe we're already heading into the final three weeks of this half term. The weather has certainly kept us guessing—heavy rain one day, glorious sunshine the next, with chilly spells and even a few glimmers of summer warmth. It's been a true mix of seasons!

Across both Marleigh and Fen Ditton, our Friday celebration assemblies continue to be a joyful part of our week. We've loved sharing the wide range of out-of-school achievements our children have brought in—from star gymnast awards and martial arts gradings to summer camp successes. These moments of pride help us build a strong, supportive school community, and we encourage families to keep sending in these wonderful stories. They mean so much to us and to the children.

A huge thank you to all families who supported our recent Macmillan fundraising efforts. Thanks to your generosity, we were able to make a collective donation of **£200** to this important cause. Your support makes a real difference, and we are incredibly grateful.

Looking ahead, we're excited to be launching our first STEM Days of the academic year:

- Marleigh – Thursday 23rd October
- Fen Ditton – Friday 24th October

Children from Year 1 to Year 6 will take part in a range of engaging and challenging learning activities designed to spark curiosity and creativity. As part of these days, we're pleased to offer online safety workshops for every child, led by Eduthing, helping them navigate the digital world safely and confidently. We're also inviting parents and carers to attend one of our Online Safety Workshops:

- Thursday 23rd October at 4:30pm – Marleigh
- Friday 24th October at 9:15am – Fen Ditton

Both sessions are open to families from either school. There's no need to book—just come along! These workshops are a great opportunity to learn more about the ever-changing online landscape and how we can support our children to use technology positively and safely. We are grateful to the two PTFAs for their financial support for these workshops for the children and families.



...continued

And finally from me—have you seen the chance to order your school tea towel? The children have worked so hard on their self-portraits, and the finished product will make a lovely keepsake or gift. The deadline for orders is Thursday 23rd October, and payments can be made via MCAS.

Wishing you all a productive and joyful start to October!



Mrs Thompson

Mrs Emily Thompson
Executive Headteacher



News from our classrooms

Butterflies Class

This week in Butterflies Class, the children have been busy exploring lots of exciting new learning! In **phonics**, they have learnt the sounds t and i and have been practising using them in their early writing, sounding out simple words and proudly having a go at writing them down.

In **maths**, the children have enjoyed sorting buttons into different groups, carefully looking at their shapes, sizes, and colours. They were challenged to make up their own rules for sorting, which led to some very creative ideas and great teamwork.



In **Science** we have been looking closely at minibeasts, describing their features and comparing them with other minibeasts. The children drew some great pictures and were able to talk about them in lots of detail.

During **RE**, the children have been learning about how we can care for others, both in school and in the wider community. They spent time thinking about how we can show kindness through our actions and words, and it was wonderful to hear the thoughtful and caring suggestions they came up with.

Overall, it has been a week full of curiosity, creativity, and kindness. Well done Butterflies Class!



Dragonflies Class

This week in Dragonflies we have enjoyed lots of new learning. Our English lessons focused on writing character descriptions of the **Colour Monster**, thinking carefully about how he looks and feels. Computing took us on a tour of the school as we hunted for all the different places computers are used.

In **maths** we began a new unit on addition and subtraction, while in science we explored habitats with a focus on woodlands and the animals and plants that live there. **PE** gave us the chance to practise our ball skills, especially dribbling and keeping control.

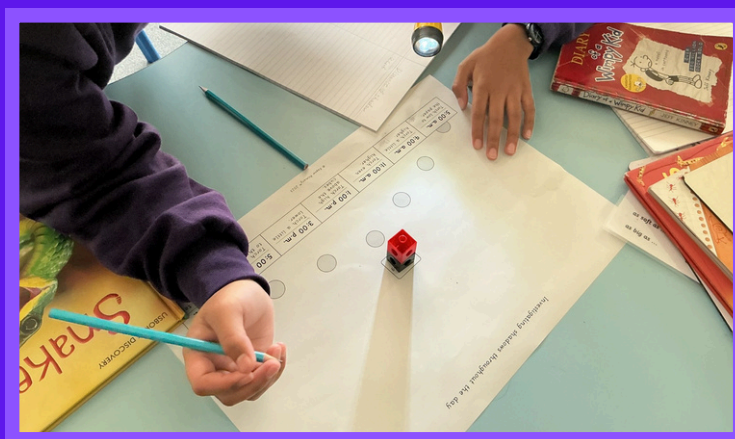
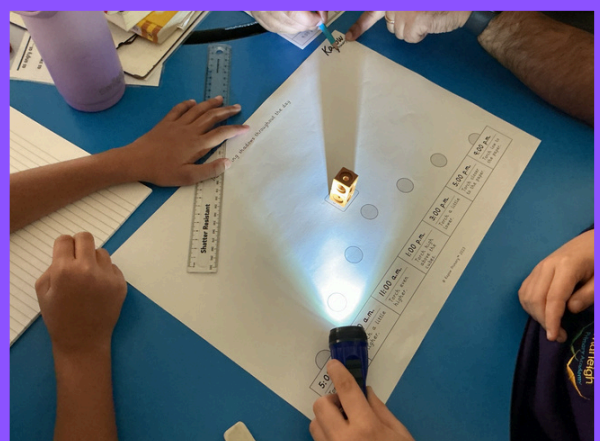




Owls Class

This week, the Owls have been busy investigating how shadows change throughout the day! We replicated the sun's movements using torches and marked the length of the shadows at different intervals.

Like true scientists, we reflected on the reliability of our tests and discussed how we can make our shadow tests more trustworthy. We are on our way to being true light and shadow experts!





Everyday Wellbeing Support for Children

Open conversations – check in regularly with how your child is feeling, listen without judgement, and reassure children that feelings (happy or sad) are normal.

Healthy routines – consistent sleep, regular meals, and limited screen time are powerful for mood regulation.

Family time – shared meals, games, or walks strengthen connection and security.

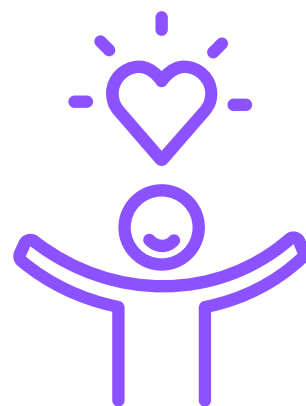
· Calm spaces – create a “safe space” at home where your child can relax, read, or use calming tools that work for them.

Modelling coping strategies – show children how you manage stress (i.e. taking deep breaths or going for a walk).

Getting Mental Health Support for Your Child

It can be a worrying time when you notice your child may be struggling with their mental health or wellbeing. Please do reach out to the school, or get in touch with one of the options below if you are noticing:

- Your child has worries which last more than a few weeks
- Their sleep, appetite, or friendships are affected
- Your child doesn't enjoy activities they normally like
- Their school attendance begins to drop





...continued

There are now three different self-referral options available to children, and their parents and carers in Cambridgeshire:

◆ **Mental Health Support Teams (MHST)**

- For mild-to-moderate worries, anxiety, or low mood.
- Focuses on early help and practical strategies.
- Mainly work with parents to help them to support their child, rather than working with the child directly
- Parents can now self-refer directly (new).

Click [here](#) for more information or to make a self-referral for your child.

◆ **YOUnited**

- For more ongoing or complex mental health needs.
- Supports children and young people aged 5–17 with issues such as anxiety, depression, or behavioural challenges.
- Families can self-refer without going through a GP

Click [here](#) for more information or to make a self-referral for your child.

◆ **EIFA (Early Intervention Family Advisor)**

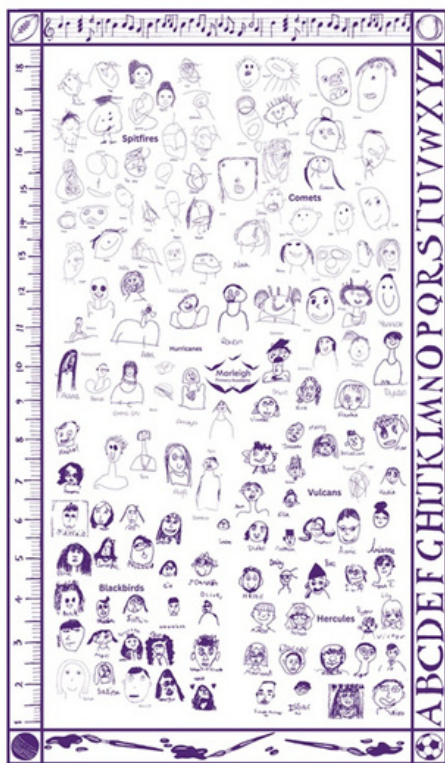
- School-based support for families.
- Helps with parenting strategies, behaviour at home, and early challenges before they escalate.
- Parents can self-refer directly to your child's EIFA linked to our school.



Pre-order Your 2025 Marleigh Tea Towel Keepsake

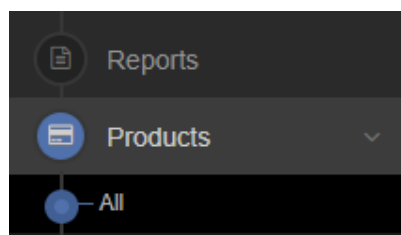
Following on from the success of last year's tea towels, we're pleased to announce your child will be drawing their self-portrait again for this year's edition! The tea towel will feature self-portraits from all children across every class, making it a wonderful gift and keepsake of their time at Marleigh.

Tea towels are available for just **£8 each**, and you can order as many as you like via **My Child At School > Products**. Orders will be delivered to the school and distributed to children before the end of the Autumn Term—*just in time for Christmas!*



How to order

- [Log into My Child At School](#)
- Find Products > Tea Towels
- Add to basket!



Order before the 22nd October Deadline



House Point Totals

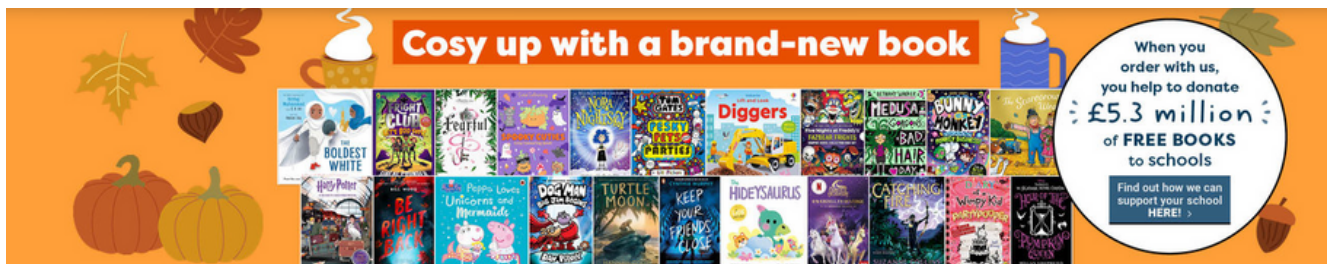
128	140	141	190
Turing	Johnson	Einstein	Cartwright

Donate to us when buying books!



Anyone can order from the Scholastic Shop! Whether you're a teacher, a parent, or a current or former student, any order over £10 you place on the Scholastic Shop will help you support your school.

Simply choose from the thousands of the books and education resources on our website and select your chosen school at checkout, and **we'll donate 20%** of your total order value back to the school in Rewards.



Don't forget to visit our book fair running every day after school until 7th Oct.

There are a wide range of new and exciting books to choose from. No cash required, all payments made online via a QR code. We look forward to seeing you there!

HAPPY BIRTHDAY

Gabriella - Dragonflies





Events and reminders



2025-26 Cambridge Junior Table Tennis League



Starts: Sunday 5th October 2025

When: Every Sunday, 10:00 – 12:00

Venue: Marleigh Primary Academy Sport Hall

Location: Marleigh Ave, Cambridge CB5 8BG

NEW!

Who's Invited

- Kids aged 6–16 of all abilities (Both Boys & Girls)
- Players of all levels welcome—no prior league experience needed

Format

- Weekly round-robin matches in age-banded groups (U12 & U16) (TBD)
- Best-of-3 or 5 games per match
- League table updated each week
- End-of-season finals & medals for top 4

Fees & Registration - £50 for the whole season

Please contact Kaung for registration. Latecomers are also welcome.

Contact & Queries

Coach Kaung (Cambridge-Parkside TTC Head Coach & Cambridgeshire League Coaching Coordinator)

khpccambridge@gmail.com

Develop skills • Competitive fun • Make new friends!

4D DANCE IS COMING TO MARLEIGH!

MULTI- AWARD WINNING DANCE AND PERFORMANCE TRAINING FOR AGES 3-18YRS.

CREATIVITY | CONFIDENCE | KINDNESS
Commercial Hip Hop | Contemporary Jazz | Acro

CONTACT US:
WWW.4D-DANCE.CO.UK
TRIALS@4D-DANCE.CO.UK
@4THDIMENSIONDANCE

BOOK YOUR TASTER SESSION TODAY

OR SCAN HERE:

A dance school like no other
Est. 2014

4D Dance had a great first day yesterday with lots of sign-ups from Nursery - Year 4, they would love to see some Year 5 and 6 pupils too!



[LEARN MORE](#)



Lost property is now in the foyer in front of the office, come and look through the items any time during school hours.

PTFA Quality Used Uniform The rail to purchase good quality used uniform can be accessed every day at both drop-off and collection via the gate next to the office.

HALLOWEEN



PTFA Halloween Trail

Do you live on Marleigh?



Are you willing to display one of our pumpkin posters in your front window?

Please fill out a few details by scanning the QR code or following the link to get your pumpkin poster.

Help us to run our first ever Halloween trail, giving the children a fun activity and raising funds for the school!



Volunteer now!



<https://forms.gle/Y4Eb7S2KPAzxnQgN9>

Helping your children fly



What Parents & Educators Need to Know about EA SPORTS FC 26



Our guide looks at the risks surrounding EA Sports FC 26 and our top tips to minimise them. This marks the third year since EA left the FIFA licence, and the game is mostly unchanged from last year. While Kick-Off mode is great for playing with friends and Career Mode allows players to fulfil long-term ambitions as a manager or player, Ultimate Team remains the main draw for many players – and it can get out of hand in terms of how much money players can invest.

WHAT ARE THE RISKS?

AN ANNUAL RELEASE SCHEDULE

As was the case with the last two EA Sports FC games and the FIFA series before it, the franchise rolls out once a year with updated squads and new features. This can make it expensive to keep up with, particularly when so many dedicated players are keen to get their hands on the latest edition.

VOICE CHAT

Voice chat can be enabled across all platforms, meaning young people can speak to anyone they play with or against. While it can be switched off, some children will no doubt want to speak to their friends while they play. This also means they may encounter strangers much older than them, which can expose them to inappropriate language or behaviours.

IN-GAME PURCHASES THROUGH ULTIMATE TEAM

Ultimate Team is the big draw for EA Sports FC, letting players spend real money on packs that they can open to build a squad of the world's best players. They're not always easy to obtain, and new, improved versions of players will be regularly added as limited-time offerings. Young people could feel pressured into spending money and experience fear of missing out.

SCAMMERS IN ULTIMATE TEAM

Ultimate Team is managed by EA itself, but that hasn't stopped scammers from looking to dupe players out of money and in-game coins. Some scammers sell their accounts, which is a violation of EA's terms of service, while others will 'sell' coins – something the developer is still working to crack down on. Some try to gain access to others' accounts, potentially giving them access to payment information.

POTENTIAL FOR ADDICTION

While EA Sports FC is potentially addictive, thanks to its fast-paced gameplay and mirroring of the real-world skill and glamour of football, Ultimate Team's focus on limited-time rewards and the lottery of winning packs can make it feel closer to gambling than gaming, which may lead to addiction and impulsive spending of money.

Advice for Parents & Educators

PREPARE FOR ANOTHER GAME IN A YEAR

The annual-release cadence aligns with the return of the school year, and can be a great way to incentivise good behaviour at the start of term. If children are applying themselves and preparing for a new year of school, or were particularly well behaved in the summer, EA Sports FC 26 could make a great reward.

LIMIT SPENDING

If you're worried about children accidentally spending real money in Ultimate Team, whether in game or on the EA Sports FC companion app, don't link a payment card to their account. Reclaiming funds can be a mountain to climb, and the dopamine hit of opening flashy packs with slick animations means one purchase can lead to another very quickly. It's also worth adding a prepaid card if you'd prefer them to make their own choices with their budget.

MONITOR VOICE CHAT

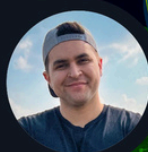
As in-game chat is open, be sure to adjust the settings in EA Sports FC 26 to lock it down. If children want to chat with their friends while they play, consider setting up a safe space for them to call, to allow them to play without fear of outsiders.

BE VIGILANT

As with last year, there are ways to keep scammers at bay. Ensure passwords are locked down, and consider using a password manager application to keep them secure. EA will never contact players through the game itself, so be vigilant with incoming messages, and block and report suspected spam. EA will contact players by email if needed, but they will never ask for usernames or passwords. Players should also avoid buying in-game currency from unofficial websites – doing so can lead to accounts being banned and could cost players money in the process.

Meet Our Expert

Lloyd Coombes is an experienced freelance writer and has been working in the gaming and tech industry for seven years. A regular visitor to the App Store to try out new tools, he's also a parent and therefore understands the importance of online safety. He's also a tech and fitness writer and has been published at sites including IGN, TechRadar, and plenty more.



The National College®

Source: See full reference list on guide page at: <https://nationalcollege.com/guides/ea-sports-fc-26>



Reception Open Day 2026

We invite you to visit our sister schools—**Marleigh Primary Academy** and **Fen Ditton Community Primary**—to help you choose the best fit for your family.

Register today for a group tour:

Fen Ditton

Friday, 10th October at 2pm

Thursday, 23rd October at 2pm

Marleigh Primary Academy

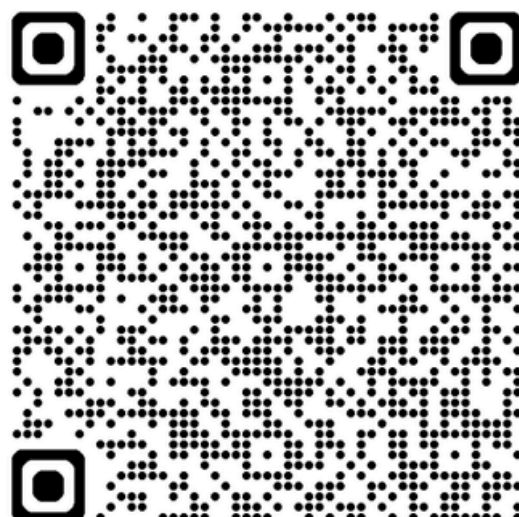
~~Friday, 3rd October at 2pm~~

Friday, 17th October at 2pm

If your child was born between 1 September 2021 and 31 August 2022 you need to apply for Reception for September 2026.

Deadline for applications is 15th January 2026.

REGISTER NOW





FOLLOW US

Term Dates 2025/26

Autumn term 2025

Thursday 4th September to Friday 24th October

Half term: Monday 27th October – 3rd November

Tuesday 4th November to Friday 19th December

Christmas holidays: Monday 22nd December to

Tuesday 6th Jan

Spring term 2026

Tuesday 6th January to Friday 13th February

Half Term: Monday 16 February to Friday 20

February

Monday 23rd February to Friday 27th March

Easter Holidays: Monday 30th March to Friday

10th April

Summer term 2026

Monday 13th April to Friday 22nd May

Half Term: Monday 25th May to Friday 29th May

Monday 1st June to Friday 17th July

Summer Holiday: Monday 20th July onwards

INSET Days (closed to pupils)

Monday 1st September

Tuesday 2nd September

Wednesday 3rd September

Monday 3rd November

Monday 5th January

Monday 20th July

Key Dates for Autumn 2025/26

Wed 1st to Wed 8th Oct	Book Fair in school - Families invited to buy books from the fair as gifts or for own children to enjoy and in turn we generate credit to purchase new books for our library.
Wed 8th Oct	Year 3 and 4 Sporting experience - all children, during school day
Mon 13th and Tue 14th Oct	Harvest - Donations for local food hub to be brought in to school
Wed 15th Oct	KS2 Cross Country tournament - 24 children will be invited to attend - during the school day
Tue 21st Oct	School Photos (individual photos) all school
Tue 21st Oct	Nursery stay and play session - all parents and carers welcome straight after drop off AM or PM
Wed 22nd Oct	Year 1 and 2 sporting experience - all children, during school day
Thu 23rd Oct	STEM day
Thu 23rd Oct	Parent Workshop - Children being active online- 5pm at Marleigh - open to all Fen Ditton and Marleigh parents, carers and friends, run by an external provider Eduthing and funded by the PTFA
Fri 24th Oct	Parent Workshop - Children being active online- 9am at Fen Ditton - open to all Fen Ditton and Marleigh parents, carers and friends, run by an external provider Eduthing and funded by the PTFA
Fri 24th Oct	Last day of Autumn 1 half term
Mon 27th Oct to Mon 3rd Nov	Half term holiday - PTFA Halloween trail

Key Dates for Autumn 2025

Tue 4th Nov	First day of Autumn 2 for all children
Wed 5th Nov	Year 5 and 6 sporting experience - all children, during school day
Mon 10th to Fri 14th Nov	EYFS National Nursery Rhyme week
Tue 11th Nov	Remembrance Day - all children invite to wear a poppy if they wish to
Wed 12th Nov	Badgers Year 6 class assembly - all parents and carers welcome 9:05-9:20
Wed 12th Nov	Panathlon sports festival - 12 children will be invited to attend - during the school day
Wed 12th Nov	Butterflies Year R Stay and Play - all parents and carers welcome straight after morning drop off 8:50-9:30am
Tues 18th Nov	Flu vaccination
Wed 19th Nov	Owls Year 4/5 class assembly - all parents and carers welcome 9:05-9:20
Wed 19th Nov	Year 3 and 4 sporting experience - all children during school day
Wed 26th Nov	Squirrels Year 3/4 class assembly - all parents and carers welcome 9:05-9:20
Wed 26th Nov	Butterflies Reception sporting experience - all children, during school day
Wed 3rd Dec	Yoga festival - 12 Year 3 and 4 children will be invited to attend - during school day
Thu 4th Dec	PTFA Festive Fayre - 3:30-5pm - all parents, carers and family welcome
Mon 8th Dec	Butterflies Reception Nativity - all parents and carers welcome 2:15
Wed 10th Dec	Year 5 and 6 sporting experience - all children, during school day
Thu 11th Dec	Year 1 and 2 Christmas Concert - all parents and carers welcome 2:15pm
Fri 12th Dec	Year 1 and 2 Christmas Concert - all parents and carers welcome 9:15am

Key Dates for Autumn 2025

Fri 12th Dec	Save the Children Christmas Jumper Day - All children invited to attend school wearing non uniform that includes a Christmas or Winter jumper - Families invited to make a donation through our JustGiving page
Mon 15th Dec	KS2 (Year 3,4,5 and 6) Church carol concert - all parents and carers welcome 2pm
Wed 17th Dec	Nursery Christmas sing a long with parents and carers 2:30pm
Wed 17th Dec	Year 3 and 4 sporting experience - all children, during school day
Thu 18th Dec	Christmas sing a long with parents and carers 3pm
Fri 19th Dec	Last day of Autumn 2 half term