

YEAR 6 SATs 2026

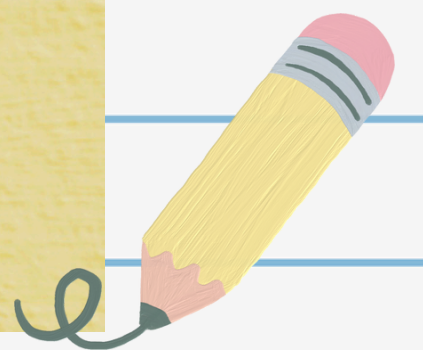
2026 KS2 NATIONAL CURRICULUM TESTS: INFORMATION FOR PARENTS

If you have a child in year 6, at the **end of key stage 2 (KS2)** they will take national curriculum assessments in: ***English grammar, punctuation and spelling; English reading and mathematics.*** These tests are usually referred to as SATs.

WHAT ARE KS2 TESTS?

Pupils in Year 6, at the end of Key Stage 2, take national curriculum assessments in:

- English (grammar, punctuation x1 and spelling x1 paper)
- English reading (x1 paper)
- Mathematics (x1 arithmetic paper and x2 reasoning papers)



PURPOSE:

- To measure how pupils compare with national curriculum standards. [GOV.UK](https://www.gov.uk)
- To help identify where a child might need extra support. [GOV.UK](https://www.gov.uk)
- To contribute to public reporting on school performance.

WHEN ARE THE TESTS?

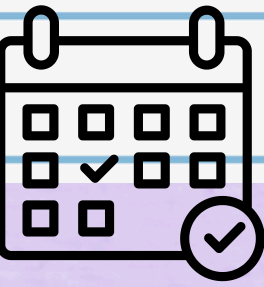
KEY DATES:

Date	Subject	Test papers
Monday 11 May	English grammar, punctuation and spelling	Paper 1: questions Paper 1: spelling
Tuesday 12 May	English reading	English reading
Wednesday 13 May	Mathematics	Paper 1: arithmetic Paper 2: reasoning
Thursday 14 May	Mathematics	Paper 3: reasoning



Please note: If a child is absent on a test day, there may be provision to take the test up to 5 school days after—but the school must apply and get approval.

WHEN & HOW YOU'LL GET RESULTS



- Schools will be able to view KS2 test results from **Tuesday 7 July 2026**.
- Parents should receive results and teacher assessments by the end of the summer term.
- Schools will also offer a chance for you to discuss your child's overall performance before the summer holidays.
- If there's concern about how a test was marked, schools can request reviews of marking. If changes are needed, they are made after reviews conclude (end of summer holidays).
- The secondary school your child will attend will also have access to the results to help plan support.

OTHER ASSESSMENTS:

- There are no tests for English writing or science at the end of KS2. These are judged through teacher assessment.
- Teacher assessments are based on a child's overall work in that subject.
- In English writing, teacher judgements may be externally moderated by the local authority.
- If a child is working below national curriculum standards in one or more subjects:
- They may be assessed under pre-key stage 2 standards, if they are engaged in subject-specific study.
- Or via the Engagement Model, if not engaged in subject-specific study.
- The school informs parents if one of these alternative assessments applies.



TIPS AND TRICKS FOR KS2 SATS:

- Stay positive – SATs are just a snapshot, not the full story.
- Encourage confidence – remind them of their strengths beyond tests.
- Celebrate effort – reward hard work, not just results.
- Stay calm – your attitude towards the tests sets the tone.



Click or scan the QR code for previous SATs papers materials.
PLEASE NOTE: Please DO NOT use 2023, 2024 or 2025 materials as we will be using these in school.

