

# YEAR 6 → YEAR 7

## APPLYING FOR SECONDARY SCHOOLS

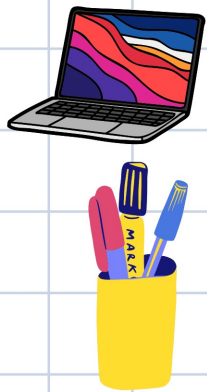


### *Applying for a Secondary School Place for September 2026:*

Moving from primary to secondary school is an exciting step! Here is the essential information you need about the application process for Cambridgeshire schools.

## HOW TO APPLY:

- Apply online at: [www.cambridgeshire.gov.uk/admissions](http://www.cambridgeshire.gov.uk/admissions)
- You can **list up to three schools** in order of preference.
- You must make a separate application for each child.
- You can edit your application up to the **deadline (31st October)**.
- Applications received after the deadline are classed as late.



## CHOOSING SCHOOLS:

- Research local schools and visit open evenings (**dates published by schools in September**)
- Consider your **catchment school** – this is important for admissions priority and free school transport.
- Check each school's admission criteria (especially if oversubscribed).
- *Some schools (e.g. St Bede's Inter Church School) require a Supplementary Information Form (SIF) – make sure this is also completed and sent directly to the school by 31st October.*



## KEY DATES:

- Applications open: **11th September 2025**
- Deadline to apply: **31st October 2025**
- Offer Day (National Offer Date): **2nd March 2026**
- Second round offers: 24th April 2026

***Late applications (after 31st October) will not be considered until the second round, so it is very important to apply on time.***



Click or scan this link to find more information about local schools and your catchment area





# YEAR 6 → YEAR 7

## APPLYING FOR SECONDARY SCHOOLS



Each school has a set number of places (*Published Admission Number, PAN*). If schools are oversubscribed, places are offered using their oversubscription criteria. Your child will be offered the highest preference school that has a space available.



### AFTER OFFERS ARE MADE:

- **2nd March 2026:** If you applied online, you can view your child's offer through the portal. Paper applicants will receive a letter.
- If your child is not offered a preferred school, they will be allocated their catchment school (if spaces are available) or the nearest school with places.
- ***You can join waiting lists for other schools and/or appeal the decision.***

### SPECIAL CIRCUMSTANCES:



- **Children with an Education, Health and Care Plan (EHCP):** You will be contacted separately by the SEN team.
- **Children in Care or previously in Care:** These applications must be supported with evidence (e.g. adoption or care order).
- **Service Families:** Applications can be made using a posting order or base address if moving to the area.

### TRAVEL ASSISTANCE

- Free school transport is normally only available to your child's nearest or catchment school, ***if it is more than 3 miles from home.***
- If you choose a school further away, you may need to arrange transport yourself.



### WHERE TO GET HELP:

**Cambridgeshire School Admissions Team**

☎ 0345 045 1370

✉ [admissions@cambridgeshire.gov.uk](mailto:admissions@cambridgeshire.gov.uk)

🌐 [www.cambridgeshire.gov.uk/admissions](http://www.cambridgeshire.gov.uk/admissions)

*Check individual school websites for open evening dates and prospectuses.*



✓ **Remember: Apply by 31st October 2025** to give your child the best chance of a place at one of your preferred schools.